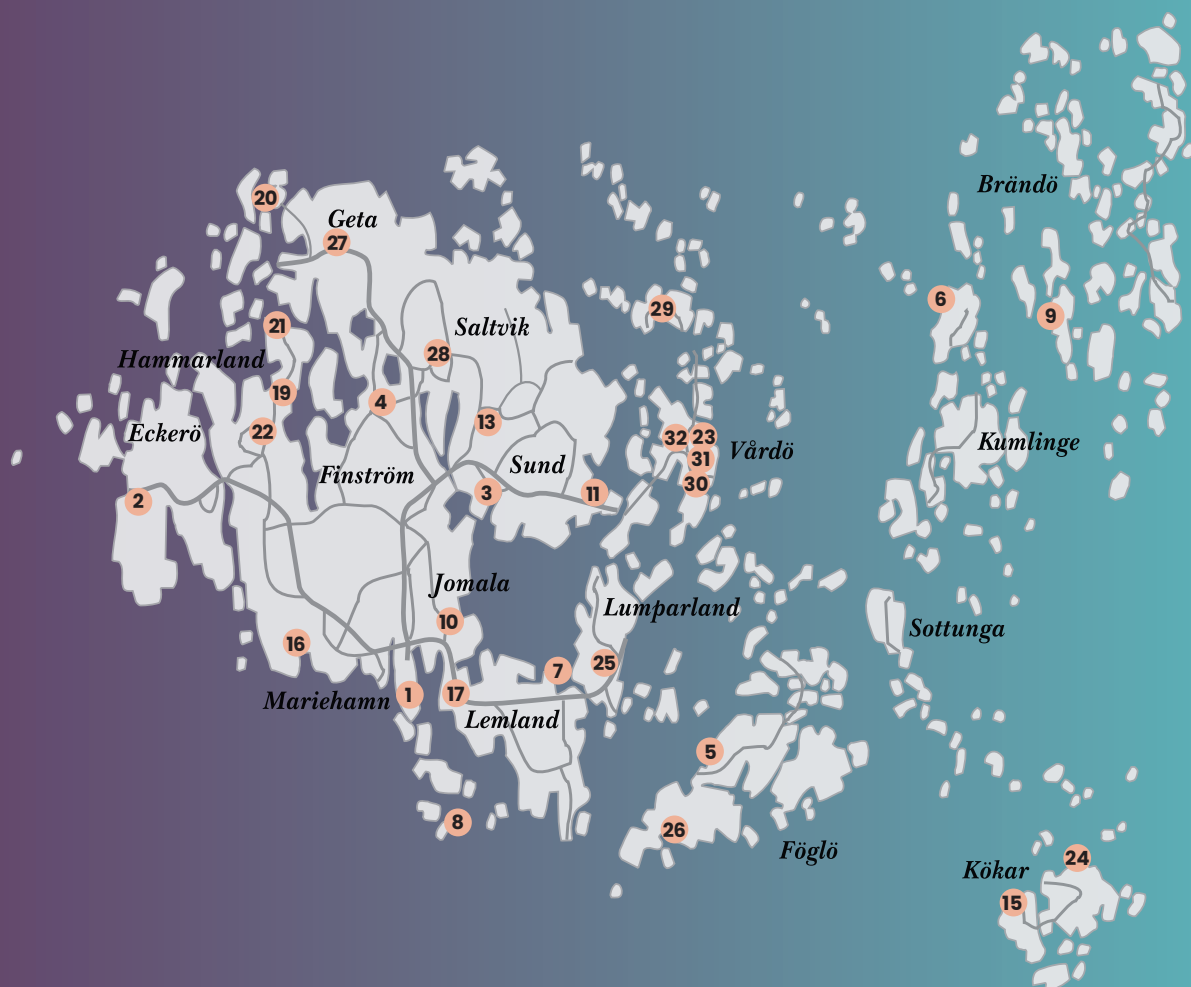


# Museums in Åland

## 2024

### Museums and sights are densely situated in Åland.

The fascinating history of Åland is brought to life in many special museums as well as in small homestead museums and collections. The biggest museums are open year round, and many of the smaller museums can also be visited during other seasons by agreement.



**Area code to Åland:**

+358 18 / 00358 18, from Finland 018



## Two museums under the same roof with over 1,000 sq. metres of floor space

### 1. Cultural History Museum of Åland

Welcome to an exciting journey through Åland's history! Our permanent exhibition takes you through 7500 years of dramatic events, but also of everyday life, play and festivities. Here you can find everything from Stone Age human skeletons and Finland's oldest medieval stained glass to champagne bottles found at the bottom of the sea. There are also themed exhibitions. For more information visit our website [www.kulturhistoriska.ax](http://www.kulturhistoriska.ax)

### 1. Åland Art Museum

Åland Art Museum presents a broad spectrum of fine arts in Åland. Step into an art experience and see how art of different genres and periods interact with each other and create dialogues. The museum also presents special exhibitions offering new impressions and influences of contemporary art. See art from a wide perspective, from paintings and sculptures to installations. Welcome! For more information and current exhibitions: [www.konstmuseum.ax](http://www.konstmuseum.ax)

#### OPEN

May–August daily at 10.00–17.00,  
September–April closed on Mondays,  
Tuesday–Sunday at 11.00–17.00,  
Thursdays at 11.00–19.00

#### ADMISSION FEE

The ticket is valid for the Cultural History Museum and Åland Art Museum.

Free entry on the first Thursday of each month.

Children 0–17 yrs free admission

Students, seniors 5 €

Adults 8 €

Annual card: adult 20 €, children 7–17 yrs/students /seniors 15 €. The annual card is valid 12 months from date of purchase.

#### GROUPS

20% discount for groups over 10 persons with single payment at the entrance, no invoicing.

20% discount for tour operators for pre-booked group vouchers.

Bookings, Tel. +358 (0)18 25426  
[info@museum.ax](mailto:info@museum.ax)

#### GUIDED TOURS

Pre-booked tours, 1 hour.

30 € per hour for groups of 1–9 persons

40 € per hour for groups of 10–19 persons

50 € per hour for groups of 20–30 persons

[www.museum.ax](http://www.museum.ax)

**Summer Ticket** (May–September) Kastelholm & Vita Björn + The Cultural History Museum of Åland & Åland Art Museum + Bomarsund visitor centre

15 € / 10 €



## 1. Åland Maritime Museum

The Maritime Museum offers you insight into Åland's maritime heritage and how the sea has impacted on people and communities on the islands. Our world-class collections tell true stories about real people – those who went away and those who stayed at home. There are stories of sadness and longing, discoveries and friendship, everyday life and exceptional events both on the seven seas and at home on the islands.

In the family-friendly museum, kids can go on a treasure hunt, see an authentic skull-and-crossbones pirate flag and discover the ship rat Ruby's very own mini exhibitions, neatly hidden in small rat holes around the museum. There's also the unmissable imaginative kids' room "Ruby and the Sea".

### Pommern

Aboard the historic vessel Pommern you can embark on a voyage around the world without ever leaving the quay. Step on board and experience life at sea in the 1930s, as Pommern makes her annual voyage to Australia and back again. Eavesdrop on the crew members, participate in the work and get caught in a powerful storm. Pommern offers an extraordinary experience for adults and kids alike.

#### OPEN

The Åland Maritime Museum is open all year  
June–August: daily 10am–5pm  
September–May: daily 11am–4pm  
Pommern is open seasonally  
June–August: daily 10am–5pm  
May & September: daily 11am–4pm  
The Pommern is closed between October and April.



#### ADMISSION FEE

The ticket includes a visit to both the Åland Maritime Museum and the Pommern.

Adults 16,50 €  
Seniors 11,50 €  
Students 11,50 €  
Children 7–17 yrs 11,50 €  
Children under 7 yrs free

#### GROUPS, MIN. 10 PERSONS

Adults 13 €  
Seniors, students 9 €  
Children 7–17 yrs 9 €  
Pre-book visits for larger groups

#### GUIDED TOURS

1–30 persons 90 € per tour + admission fee.  
Guided tours must be pre-booked.

[www.sjofartsmuseum.ax](http://www.sjofartsmuseum.ax)

[www.pommern.ax](http://www.pommern.ax)

Tel. +358 (0)18 19930



### **1. Mariehamn Museum & Miniature Town Model**

The Museum focuses on promoting the locals' and the visitors' interest in Mariehamn and its history. The museum's main attraction is the miniature model that illustrates Mariehamn in the 1920s. The local senior club Nybyggarna has for more than thirty years built over 600 miniature model houses, scale 1:100 cm. The many details of the houses, gardens, people, animals, ships and cars make the city model alive and unique.

The summer exhibition 2024 at the gallery adjacent to the miniature town model tells about sailors and captain's houses in Mariehamn during the age of the great sailing ships.

Mariehamn Museum is maintained by the association Miniaturstadens vänner.

OPEN: 13 June–15 Aug Tuesday–Sunday at 12.00–15.00, not during Midsummer weekend, September–May open on Saturdays at 14.00–16.00. Guided tours for pre-booked groups.

ADMISSION FEE: Free. Accessible for disabled.

Bookings, guided tours and more information: Nybyggarna, Mariehamns pensionärsförening, Ralph E. Sjöholm +358 (0)400 723808 or Miniaturstadens vänner, Guy Schåman +358 (0)18 21909. You can also send a SMS or contact us via Facebook at "Mariehamnmuseet med Modellstaden".

Ålandsvägen 42 (on the ground floor below Mathis-Hallen).

[www.mariehamnmuseet.hembygd.fi](http://www.mariehamnmuseet.hembygd.fi)  
[www.mariehamn.ax/kultur-och-bibliotek/kulturarv/mariehamnmuseet](http://www.mariehamn.ax/kultur-och-bibliotek/kulturarv/mariehamnmuseet)



### **1. The Åland Islands Emigrant Institute**

Upon request, the Emigrant Institute will happily assist considering Åland emigrants and emigration. It has a significant library that is available covering the local area. Additionally, it has both local as well as worldwide contacts to colleagues and organizations with similar interests.

The Institute also owns a small exclusive exhibit of donated items on its premises.

OPEN

Weekdays at 12.00–16.00 (from 12–4 p.m.) and by appointment agreed.

ADMISSION FEE

Free admission

Norra Esplanadgatan 5, Mariehamn

Tel: +358 (0)18-13325

E-mail: [emi.inst@aland.net](mailto:emi.inst@aland.net)

[www.eminst.net](http://www.eminst.net)





## 2. Eckerö Post & Customs House

Eckerö Post & Customs House with a scenic location near the Eckerölinjen ferry terminal is open during the season. In the main building you can visit exhibitions on local crafts and Åland design, as well as an exhibition depicting the history of the building.

The museum shop offers a good selection of Åland handicrafts and local treats. Guided tours presenting the exciting history of the building and current exhibitions can be booked in advance.

Eckerö Post & Customs House was designed by Carl Ludvig Engel and was completed in 1828. It was the first border stop for travellers arriving from The Sea of Åland. The building was used by postmasters and customs officers who lived and worked here for about a hundred years.

When you post your postcard or letter from the letter box of the house it will get the original postmark of the Post & Customs House!

OPEN

11.5–22.9 daily at 10.00–17.00

Free admission to the main building.

Pre-booked guided tours, c. 45 minutes.

30 € for groups of 1–9 persons

40 € for groups of 10–19 persons

50 € for groups of 20–30 persons

[www.postochtullhuset.ax](http://www.postochtullhuset.ax)



## 2. Åland Hunting & Fishing Museum

Along the red cliffs of Käringsund, amidst the picturesque and historical settings of the fishing village, rises the Åland Hunting and Fishing Museum – a wooden house resembling a cluster of boathouses, designed by the architect Folke Wickström. Inside the museum, hunting and fishing gear, as well as flora and fauna, narrate the life of the Åland archipelago, its nature, and culture from the past, present, and future.

The main exhibition offers visitors fascinating insights into Åland archipelago life from the turn of the last century. Explore our new seal hunting exhibition or browse through the exhibits of propellers in our boat engine exhibition. This year, we have our temporary exhibition “Oh Pool!” which is suitable for the whole family. We also have an art exhibition by photographer Kenneth Bamberg showcasing photographs of small boat engines. The museum has activities for children, and the museum shop, Havsboden, offers a well-assorted range of local products.

OPEN

14.5–23.6 Tuesday–Sunday at 10.00–17.00,

24.6–18.8 daily at 10.00–17.00,

19.8–1.9 Tuesday–Sunday at 10.00–17.00.

ADMISSION FEE

Adults 8 €

Seniors/Students 5 €

Children 7–17y 5 €

Children under 7y free admission

Åland hunters free admission

For more information and prices, see [www.jaktfiskemuseum.ax](http://www.jaktfiskemuseum.ax)

Welcome!



### 3. Kastelholm Castle

Kastelholm is the only castle in Åland. The castle was the home for servants, royalty and prisoners since the 1300s. The Vasa kings are strongly associated with the castle's history, e.g. King Eric XIV was held prisoner in the tower and Katarina Stenbock, Gustav Vasa's queen dowager, visited the castle in summertime. After the castle had been in disrepair for a long time, the first restoration works were started in the 1800s. Today, Kastelholm Castle is one of Åland's foremost sights and offers activities for families, and guided tours daily during the peak season. Close by is the outdoor museum Jan Karlsgården and the old crown prison Vita Björn, today a museum.

OPEN: 28–30.3 at 10–16.

Open at Easter 28–30.3 at 10–16 and autumn school holiday 17–18.3 at 10–16..

ADMISSION FEE: Kastelholm ticket to the Castle and Vita Björn 8 € for adults, 5 € for seniors, children and students. Family tickets 20 €.

20% discount for groups min. of 11 persons with single payment at the entrance.

20% discount for tour operators for pre-booked group vouchers.

### 3. Jan Karlsgården Open-air Museum

Jan Karlsgården open-air museum has free admission. The outdoor museum displays an Åland homestead from the latter half of the 1800s with about twenty buildings that originate from different parts of Åland. Here you can learn about building and farming heritage and see how the locals used to live in the past.

There are themed craft days on Wednesdays in July. The Midsummer's Eve is celebrated by raising the traditional Åland midsummer pole and with programme and catering. The annual Christmas market held here is the biggest in Åland.

OPEN: 2.5–22.9 daily at 10.00–17.00

ADMISSION: free entry

**Summer Ticket** (May–September) Kastelholm & Vita Björn + The Cultural History Museum of Åland & Åland Art Museum + Bomarsund visitor centre



### 3. Vita Björn Prison Museum

The crown prison Vita Björn in Kastelholm was built in 1784 after Kastelholm Castle's heyday was over. Vita Björn was used both as a detention centre and as a prison until 1975. Today Vita Björn is a prison museum and depicts typical country prison interiors.

OPEN: 2.5–22.9 daily at 10.00–17.00

ADMISSION FEE: Kastelholm ticket to Vita Björn and the Castle 8 € for adults, 5 € for seniors, children and students. Family tickets 20 €.

Ticket to Vita Björn only, adult 2 €, senior, child, student 1 €.

20% discount for groups min. of 11 persons with single payment at the entrance.

Tel. +358 18 25 730,  
kastelholm@museum.ax

[www.kastelholm.ax](http://www.kastelholm.ax)  
[www.museum.ax](http://www.museum.ax)

15€ / 10€



### 1. Åland Merchant Museum

The small general store museum with a country shop character is located next to Tullarns Äng park in Mariehamn. The museum gives the visitor a historic insight into the past of a local well-stocked 19th-century general store and its equipment. The interiors have been collected from several old country shops, including the archipelago grocery store Rautas at Lumparsund. The store was also the beginning of Nikolai Sittkoff's business career, a successful ship owner and merchant in Åland in the 1800s.

The museum also houses parts of J G Eriksson's cobbler's workshop and store, one of the first commercial crafts shops in Mariehamn.

The newspaper Tidningen Åland's 25th anniversary edition features other interesting details from Åland's early businesses. For example, when Paulig, a major coffee retailer in Finland, started with packaging of loose coffee, thanks to an Åland initiative.

#### OPEN

Wednesdays at 12.00–15.00 after Midsummer until the middle of August. Opening hours can also be arranged at other times by appointment by phone. (The number of visitors is limited according to current restrictions.)

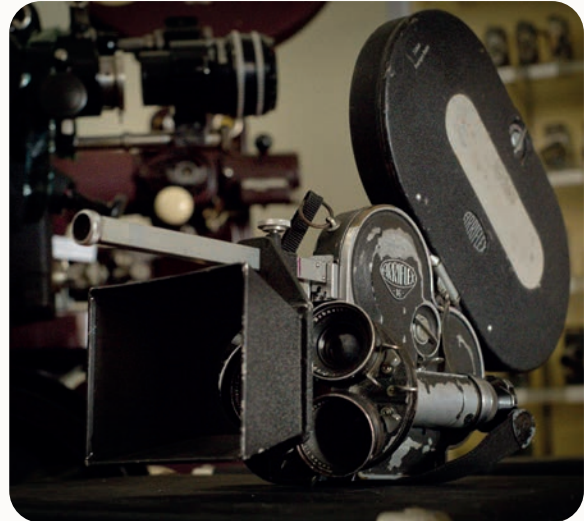
Contact: Mikael Björkvall +358 (0)400 786 845, mikael.bjorkvall@aland.net

#### ADMISSION FEE

Free admission

#### LOCATION

Next to Övernässtugan (Skillnadsgatan 2), Mariehamn



### 4. Åland's Camera Museum

Åland's camera museum is an international vintage camera museum that can compete with the world's largest photo-technical museums. Exhibitions about the history of the cameras and everything in photography and photos, film and video recordings. There is a darkroom, a camera shop with studio, TV and sound technology equipment, and also newspaper Dagen Nyheter's vintage cameras and press photos.

#### OPEN

1.6–31.8 Tuesday–Saturday at 11.00–18.00  
Guided tours at 12.00, 14.00 och 16.00

In September Saturdays and Sundays at 11.00–16.00  
Guided tours at 12.00 och 14.00

The museum is always open for pre-bookings, tel. +358 (0)40 623 7971, info@cameramuseum.com

#### ADMISSION FEE

8 € per person, children 4 €  
Groups by agreement.

Bastövägen 7, Pålseböle

[www.cameramuseum.com](http://www.cameramuseum.com)





## 6. The Hermas Homestead Museum

Hermas is an old archipelago homestead in Enklinge, Kumlinge.

The homestead consists of 19 buildings that date back to the first half of the 1500s. The collections of items are unique and depict the lifestyle that no longer exists.

The people who lived at Hermas were fisherman-farmers who kept livestock and farmed for their own needs. The homesteaders lived a self-sufficient life, making almost everything they needed – food, clothes, utensils and tools – right on the homestead. At Hermas the visitors are taken 100 years back in time.

OPEN

18.6–4.8 daily at 10.00–16.00

The museum closes at 14.00 on Midsummer's Eve.

Voluntary admission fee.

[www.museum.ax](http://www.museum.ax)



## 9. Lappo Archipelago Museum

The archipelago museum on Lappo displays traditional Åland archipelago and fishing culture. The collections include about ten work boats, among them the only preserved Storbåt boat in Åland. The boats were used by archipelago people for fishing, hunting and market trips, and for carrying mail and people.

A permanent photo exhibition depicts the life in the village in the past. The museum also displays a smaller exhibition of stuffed birds showing the rich bird life in the archipelago.

Adjacent to the museum is a smithy, renovated to its original condition. Here, the visitor can see a blacksmith at work and buy locally made forged items. The smithy also has a collection of old objects.

OPEN

Open 15 June–3 Aug 2024. Visitors are also welcome other times all year round.

Guided tours for groups in Swedish, call Dan-Ole Åkerberg, tel +358 (0)407 386 896

Guided tours in Finnish; call Erik Ohlsson, tel. +358 (0)400 529 462

ADMISSION FEE

4 € per person, children under 12 yrs free.

Groups 4 € per person, incl. guided tour.

For groups of 50–60 persons.

Facebook: Skärgårdsmuseet i Lappo

[www.lappo.ax](http://www.lappo.ax)





## 10. Önningeby Art Museum

Önningeby Museum is an art and cultural history museum that displays an artist colony founded by Victor Westerholm in the village of Önningeby. The artist collective attracted mainly Finnish and Swedish, but also Estonian artists for almost three decades, from 1886 until 1914. The painters were influenced by French en plein air artists. Over the years, the colony was visited by artists such as J.A.G. Acke, Anna Wengberg, Hanna Rönberg, Elin Danielson-Gambogi and Edvard Westman, among others.

Önningeby Museum was founded in 1992 and is housed in a stone barn from 1869. The impressive art collection displays significant works, among them the monumental "Snow Light" and "Morning Mist" by J.A.G. Acke. There are also special exhibitions and contemporary fine arts. Adjacent to the museum is a small café, a well-stocked museum shop and a vintage shop.

OPEN: May Saturday 11.00–15.00.  
June–August Tuesday–Sunday 11.00–16.00.  
September Thursday 18.00–20.00, Saturday–  
Sunday 11.00–15.00. Other times by agreement.  
Tel. +358 (0)405 533 804

ADMISSION FEE: 5 € adults, 3 € students.  
Children under 16 yrs free when accompanied  
by an adult. Guided tours for groups 100 €  
(working days) and 150 € (Sundays).

Address: Jonesagatan 3, Önningeby Jomala  
Tel: +358 (0)18 33 710  
E-mail: [info@onningeby.com](mailto:info@onningeby.com)  
[www.onningeby.com](http://www.onningeby.com)  
[www.facebook.com/onningebymuseet](http://www.facebook.com/onningebymuseet)



## 7. Pellas Shipmaster's Homestead

The Pellas homestead is a living museum from the farmer–shipping era. The 19th century shipowner's house has been beautifully and expertly renovated. It has been the home for several generations, whom have left their own trace in the house. Shipping was always the main source of income – from small wooden sailing boats of the 19th century to the large windjammers that sailed the oceans during the first half of the 20th century. A visit to Pellas takes you back to the bygone days – familiar and loved by many, but now beyond reach. There is a charming café in the main building that serves home-baked cakes, sandwiches, Åland pancake, and soup. The large attic contains an exhibition area which displays a contemporary art exhibition, changed yearly. There is also a permanent exhibition of Pamela Eriksson's photos of the four-masted barque Herzogin Cecilie taken between 1934–1936.

The outhouses display exhibitions of carpenters' tools and farming implements from bygone times.

OPEN  
14.6–1.9 Tuesday – Sunday at 11.00–16.00  
For groups by agreement from 1.4 – 31.10

ADMISSION FEE  
Adults 5 €  
Children under 15 yrs free  
Guided tours 60 € (pre-booked groups only)  
Bookings, tel. +358 (0)457 313 4012,  
[skeppargardenpellas@gmail.com](mailto:skeppargardenpellas@gmail.com) or to the  
museum hostess [freya.darby@gmail.com](mailto:freya.darby@gmail.com)

[skeppargardenpellas.ax](http://skeppargardenpellas.ax)



## 11. Bomarsund Visitor Centre

The visitor centre is the gateway to the fortress ruin area and gives an insight into the history and the impact of the Russian fortress on Åland during the first half of the 19th century. In an easily accessible way the exhibition depicts the great political events that tied the fate of Åland with the great European powers. Furthermore, the centre highlights the life at the construction site when the mighty fortress was taking shape.

### OPEN

2.5–30.9 daily at 10.00–17.00  
Easter: 28–30.3 at 10.00–16.00  
30.11 at 11.00–16.00

### ADMISSION FEE

Adults 8 €, children 7–17 yrs, students/seniors 5 €  
20% discount for groups over 10 persons with single payment at the entrance, no invoicing.  
20% discount for tour operators for pre-booked group vouchers.

Bookings by e-mail: [bomarsund@museum.ax](mailto:bomarsund@museum.ax)

[www.museum.ax](http://www.museum.ax)



## 22. Åland Fire Brigade Museum

The museum is located in Mörby, Hammarland at Mörbyvägen 121, and hosted by the Häger homestead. The museum houses about 20 old fire engines and other firefighting equipment from different parts of Åland.

### OPEN

Tuesday–Saturday 1.6–15.8 at 12.00–16.00. Closed on Midsummer's Eve and Day. Other times by agreement by phone, +358 (0)40 184 6696

### ADMISSION FEE

Adults 3.50€, children 7–12 yrs 2 €.  
Children under 7 yrs free.

Discount of 1€ per person for groups over 10 persons.

Guided tours by appointment.  
E-mail: [json2008@hotmail.com](mailto:json2008@hotmail.com)

[www.brandkar.ax](http://www.brandkar.ax)

Mörbyvägen 121, Hammarland

**Summer Ticket** (May–September)  
Kastelholm & Vita Björn +  
The Cultural History Museum of  
Åland & Åland Art Museum +  
Bomarsund visitor centre

15€/10€



## 20. Dånö Homestead Museum

Life on Dånö in the past and present – visit a unique homestead museum.

Welcome to our interesting museum in beautiful archipelago surroundings. The old pilot cottage is furnished as it was 200 years ago. There are household utensils and tools that few people recognise today. The unique items include e.g. a cupboard from the 1700s and a figure head that once adorned a sailing ship from Geta.

Dånö Homestead Museum is in Geta, 40 km north of Mariehamn. There is a road connection all the way to the cottage.

Special exhibition: Bed during the self-sufficiency.

### OPEN

15.6–18.8 daily (except Wednesdays) at 13.00–16.00, on Wednesdays at 16.00–19.00

### ADMISSION FEE

Admission incl. guided tour 5 €  
Children under 12 yrs free.

### GROUPS

School groups 7–20 persons 30 €  
Groups over 20 persons 45 €  
Other groups by agreement

Tel: +358 (0)40 768 5782, +358 (0)45 352 3695,  
+358 (0)40 501 9727



## 21. Skarpnåtö Homestead Museum

At Skarpnåtö homestead, you get to experience the early 18th century in scenic surroundings. Main building and sheds with displays of museum objects. In this scenic setting, several scenes in the film production "Stormskärs Maja" (2023) was shot. The film productions "Stormskärs Maja" (1976) and "Iris" (2011) were also shot in the farm surroundings.

You can stroll around the farm at your own pace and look through the gates of the houses. This year a new space is opened for viewing.

### OPEN

26.6–25.8, Wednesday–Saturday at 12.00–19.00, closed on Sundays and Mondays.

Other times by agreement, tel.  
+358 (0)40 553 8712

### ADMISSION FEE

Admission includes 1 hour guided tour  
Visitors up to 9 persons upon agreement  
10–19 persons 10 € per person  
20–50 persons 6 € per person.

For guided tours and more information contact Britt-Marie Häger, e-mail: [britta.h@aland.net](mailto:britta.h@aland.net), tel. +358 (0) 40 553 8712

[www.skarpnato.ax](http://www.skarpnato.ax)





### 23. The Åland School Museum

In 1888, teacher Viktor Jansson of Vårdö built the school that houses the Åland School Museum today. Jansson taught and lived here until his death in 1895. The old schoolhouse has now been carefully restored to its original 1900s interiors. Most of the exhibited objects belong to Ålands Museum, but there are also deposits from private persons and Vårdö municipality. Some objects are authentic, and have belonged to Viktor Jansson and his family. The School Museum is open to visitors only during the summer.

OPEN

Open daily 24.6-4.8 at 10.00-16.00.

ADMISSION FEE

Voluntary admission fee

[www.museum.ax](http://www.museum.ax)



### 25. Nybonds in Krogstad

Discover the everyday life of the past! Nybonds farmstead in Lumparland Krogstad is one of the few preserved buildings from the late 1700s in Åland.

The main house has been intact since the 1980s when the last inhabitant Wilhelm Andersson lived in the house without electricity or running water. Today the farm is run by a homestead association that thrives to preserve the old house and recreate the farm environment.

OPEN

Tuesday evenings after midsummer until mid-August at 18.00-21.00, also a café and flea market. Other times and guided tours by agreement.

ADMISSION FEE

3 € per person, children under 15 yrs free.  
Guided tours 20 € for groups up to 20 persons.

- Café for groups up to 40 persons.
- Customized history-themed days for school children.
- We welcome volunteers for our renovations projects.

Visit our Facebook site @nybondsikrogstad, call +358 (0)45 7570 8180 or e-mail [annsofi.joelsson@aland.net](mailto:annsofi.joelsson@aland.net)

Gamla Krogstadvägen 192, Lumparland



### 29. Author's Home Strömmen

Anni Blomqvist became a popular writer with her novels about "Stormskärs Maja". Her books about the life in the archipelago have been loved by generations of readers. In the 1970s Åke Lindman directed a popular TV series based on the Maja novels. A new film about Stormskär's Maja directed by Tiina Lymi has premiered in 2024.

Anni Blomqvist was interested in social issues on her home island Simskäla in the northern archipelago of Åland. After her death Åland's Culture Foundation took over the home at Simskäla and maintains it as a writer's residence and museum according to the author's last will.

#### OPEN

Strömmen welcomes guests by agreement on 15.5–30.9. Tel. +358 (0)457 344 5383.

For guided tours contact Marja Ojanen, tel. +358 (0)457 345 4007.

#### ADMISSION FEE

2 € per person and 20 € for groups of up to ten people.

[www.kulturstiftelsen.ax](http://www.kulturstiftelsen.ax)

[www.aland.com/se/skrivarhemmet\\_strommen](http://www.aland.com/se/skrivarhemmet_strommen)



### 27. Geta Nostalgia and Motor Museum

The museum in Geta in northern Åland was started out as a rental garage for veteran cars, but has gradually become a museum filled with vehicles from 1919 to the 1960s. Apart from veteran vehicles there is also a fine selection of other donated items on display. In 2019, the museum's major project was the rebuilding of Edo's legendary petrol station, closed in 2018. The petrol station was moved from Mariehamn to Geta where it now stands with its original equipment and interiors, next to the museum.

For more information, see Facebook: "Geta nostalgia motor museum"

#### ADMISSION

Voluntarily entry fee

Utgårdsbackan 20, Geta.

Open by appointment.

Tel. +358 (0)40 079 1534, +358 (0)40 589 7880

[www.motormuseum.ax](http://www.motormuseum.ax)



### 28. Bomärket

The world's largest collection of house marks. Göran Dahl has been collecting house marks since the 1970s. There are around 1,500 farms and crofters' cottages in Åland. Dahl's collection consists of about 2,000 objects from half the number of the farms.

The origin of house marks is not known, but they have been used for at least 2,000 years. Some house marks are similar to runes, but they are older than runes.

In the past, all farms in the same region must have different house marks. However, also duplicates existed in different parts of Åland. When the farms were divided, new marks were created by modifying the old ones.

Göran Dahl's large documentation material consists of 10,000 house marks in natural size and with accurate notes on their origin. The marks can be traced by village name and farm, but also by their appearance.

Open by agreement.

#### ADMISSION FEE

2 € per person incl. guided tour.  
Free for donators.

Saltviksvägen 212  
Tel. +358 (0)400 450 004



### 30. Lasse Eriksson's Ship Museum

The museum focuses on Åland shipping of machine-driven steam and motor vessels from the 50s, 60s and 70s. The collections include paintings, photos and literature as well as equipment and promotional material.

Many of the objects are from engine rooms and there is a large collection of maritime-themed literature, posters of large diesel engines and drawings of many vessels.

Ferry traffic and the first ferries have an important focus in the museum. Items from Algot's Shipyard have their own museum corner.

The collections include a couple of veteran tractors from 1937 to 1964. Old veteran engines can also be driven on request. There is a telegraph machine and an engine room alarm system on display and a steam engine on site.

#### OPEN

Wednesdays in July and August at 12.00–20.00.  
Other times and detailed guided tours by agreement.

#### ADMISSION FEE

Free admission. 40 € for groups of 10–15 persons (incl. entry fee).

The museum can cater smaller groups also in the evenings.

Lasse Eriksson, tel. +358 (0)18 47626,  
+358 (0)457 382 8459, lee@ppi.inet.fi

Grundsundavägen 271, Vårdö





### 31. Wennström's General Store Museum

Wennström's general store in the village of Grundsunda in Vårdö has a rich history. It all started when Gustav Adolf Wennström inherited forest from his father in the 19th century and built himself a boat. In 1979, the medical counsellor Carl-Erik Vænerberg and his wife Agneta, descendant of Wennström, moved to the farm and began the ten-summer-long restoration of the old general store.

#### OPEN

1.6–31.8 at. 12–20 or by agreement.

#### ADMISSION FEE

Voluntary admission fee

Skolvägen 32, Grundsunda

Tel. +358 (0)40 071 4866

E-mail [carl-erik.vaenerberg@fimnet.fi](mailto:carl-erik.vaenerberg@fimnet.fi)



### 32. Seffers homestead museum

Homestead museum in Lövö village is originally a farmhouse from 1700s. Professor Otto Andersson bought the house because he wanted to have a homestead museum in his childhood village. He donated the house to the local Martha Association, which takes care of the house and keeps the old traditions alive. The house was renovated 2013–2014 and thereafter the museum has been open for public during a few weeks every summer.

Coffee with Åland pancake is available as well as a possibility for guiding. For more information contact mobile (+358) 04573613703 Riitta Johansson, Vårdö Martha Association

#### OPEN

1.7 – 16.8 Monday – Friday at 12–17

#### ADMISSION FEE

Free admission

#### LOCATION

Lövövägen 230, Vårdö

## MARITIME MUSEUMS

**1. THE MARITIME QUARTER** Östra hamnen, Mariehamn. Open from mid-June until early August. Tel. +358 (0)40 528 3899. info@sjokvarteret.ax www.sjokvarteret.ax

**1. ÅLAND MARITIME MUSEUM** Västerhamn, Mariehamn. Museum, open year round. Pommern, open from May until September. Tel. +358 (0)18 19930, www.sjofartsmuseum.ax, www.pommern.ax

**5. PILOT COTTAGE** Degerby, Föglö. Open in summer season. Tel. +358 (0)18 50322, www.foglo.ax

**7. PELLAS SHIPMASTER'S HOMESTEAD** Granboda, Lemland. Open in summer season. Tel. +358 (0)457 570 1688, +358 (0)457 313 4012, +358 (0)18 34420. skeppargardenpellas.ax

**8. THE RÖDHAMN MUSEUM** at old radio beacon, Rödhamn. Open in summer season. Tel. +358 (0)18 54028. www.segel.ax/sv.gasthamnar/rodhamn

**9. LAPPO ARCHIPELAGO MUSEUM** Brändö. Open in summer season. Other times call +358 (0)400 529 462.

**30. LASSE ERIKSSON'S SHIP MUSEUM** Grundsundavägen 271, Vårdö. Open by appointment. Tel. +358 (0)18 47626, +358 (0)457 382 8459. lee@pplinet.fi

## ART MUSEUMS

**1. ÅLAND ART MUSEUM** Stora gatan 1, Mariehamn. Open year round. www.museum.ax

**10. ÖNNINGEBY ART MUSEUM** Jonesasgatan 3, Önningeby. Open in summer season. Tel. +358 (0)18 33 710, +358 (0)40 5533 804. www.onningeby.com

## CULTURAL HISTORY MUSEUMS

**1. MARIEHAMN MUSEUM & MINIATURE TOWN MODEL** Ålandsvägen 42, Mariehamn. 13.6–15.8 at 12–15, Tue–Sun. Tel. +358 (0)400 723 808, +358 (0)18 21909. www.mariehamn.ax

**1. THE ÅLAND ISLANDS' EMIGRANT INSTITUTE** Norra Esplanadgatan 5, Mariehamn. Open weekdays at 12–16 and by appointment. Tel. +358 (0)18 13325. www.eminst.net

**1. CULTURAL HISTORY MUSEUM OF ÅLAND** Stora gatan 1, Mariehamn. Open year round. www.museum.ax

**1. ÅLAND MERCHANT MUSEUM** Next to Övernässtugan (Skillnads gatan 2), Mariehamn. Open in summer season. Tel. +358 (0)400 786 845.

**2. ECKERÖ POST & CUSTOMS HOUSE** Sandmovägen 111, Storby. Open in summer season. Tel. +358 (0)457 530 1435. www.postochtullhuset.ax

**2. THE MAIL ROUTE MUSEUM** Eckerö Post & Tullhus, Norra flygeln, Eckerö. Open in summer season. Tel. +358 (0)457 530 1300. www.museum.ax

**2. ÅLAND HUNTING & FISHING MUSEUM** Käringsund, Eckerö. Open in summer season. Tel. +358 (0)40 588 6716, +358 (0)18 38299. www.jaktfiskemuseum.ax

**3. VITA BJÖRN PRISON MUSEUM** Kastelholm, Sund. Open in summer season. Tel. +358 (0)18 25730. www.museum.ax

**3. JAN KARLSGÅRDEN OPEN-AIR MUSEUM** Kastelholm, Sund. Open in summer season. Free entrance. Tel. +358 (0)457 350 0557. www.museum.ax

**3. KASTELHOLM CASTLE** Kastelholm, Sund. Open in summer season. Tel. +358 (0)457 350 0558. www.museum.ax

## 4. THE FOUNDATION OF ÅLAND CAMERA MUSEUM

Bastövägen 7, Pålshöle. Open in summer season, other times by agreement. Tel. +358 (0)40 623 7971. www.cameramuseum.com

**5. THE FÖGLÖ MUSEUM** Degerby, Föglö. Open in summer season. Tel. +358 (0)18 50322. www.foglo.ax

**6. THE HERMAS HOMESTEAD MUSEUM** Enklinge. Open in summer season 18.6–4.8 at 10–16. Tel. +358 (0)40 559 5562. www.museum.ax

**11. BOMARSUND VISITOR CENTRE**, Bomarsund, Sund. Open daily in summer season. 2.5–30.9 at 10–17. www.museum.ax

**13. IDA'S COTTAGE** Borgboda, Saltvik. Open April–October.

**22. THE ÅLAND FIRE BRIGADE MUSEUM** Mörby, Hammarland. Open in summer season. Tel. +358 (0)40 184 6696. www.brandkar.ax

**23. THE ÅLAND SCHOOL MUSEUM** Storbacken, Vårdö. Open in summer season 27.6–6.8 at 10–16. Tel. +358 (0)457 548 3934. www.museum.ax

**24. KÖKAR MUSEUM** Hellsö. Open year round by agreement. Tel. +358 (0)457 524 4077. www.kokar.ax

**27. GETA NOSTALGIA AND MOTOR MUSEUM** Uppgårdsbäckan 20, Geta. Open by appointment. Tel. +358 (0)40 079 1534, +358 (0)40 589 7880, www.motormuseum.ax

**28. BOMÄRKET** Saltviksvägen 212, Saltvik. Open by appointment. Tel. +358 (0)400 450 004.

**31. WENNSTRÖM'S GENERAL STORE MUSEUM** Skolvägen 32, Grundsunda, Vårdö. Open in summer season. Tel. +358 (0)40 071 4866.

## HISTORICAL SIGHTS

Open year round with free entry.

**11. THE FORTRESS OF BOMARSUND** Bomarsund, Sund. www.museum.ax

**15. MONASTERY CELLAR/FRANCISCAN CHAPEL** Hamnö, Kökar. Open April–October. Information and artefacts from archaeological excavations. Tel. +358 (0)18 25426. www.museum.ax

**16. KUNGSÖ COASTAL BATTERY** Jomala. Tel. +358 (0)18 25426.

**17. LEMBÖTE CHAPEL RUINS** Lemland. Tel. +358 (0)18 25426.

**19. SÁLIS COASTAL BATTERY** Hammarland. Tel. +358 (0)18 25426.

## HOMESTEAD MUSEUMS

**20. DÅNÖ HOMESTEAD MUSEUM** Dånö, Geta. Open 15.6–18.8. Tel. +358 (0)40 768 5782, +358 (0)40 501 9727. kgk@aland.net. www.visitaland.com

**21. SKARPNÅTÖ HOMESTEAD MUSEUM** Skarpnåtö, Hammarland. Open 26.6–25.8, Wednesday–Sunday at 12–19. Tel. +358 (0)40 553 8712. www.skarpnato.ax

**25. NYBONDS IN KROGSTAD** Lumparland. Farm house dating back to the 1700s. Open in the season or by agreement. Ph. +358 (0)457 570 8180

**26. MATSMÅRS HOMESTEAD MUSEUM** Bråttöv. 11, Hummersö, Föglö. Open in summer season. Tel. +358 (0)40 553 3804. www.facebook.com/matsmarsmuseigard

**29. AUTHOR'S HOME STRÖMMEN** Vårdö. Open by appointment. Tel. +358 (0)457 344 5383, guided tours +358 (0)457 345 4007.

**32. SEFFERS HEMBYGDSGÅRD** Lövvägen 230, Vårdö. Open 8.7–16.8 Monday–Friday at 12–17. Tel. +358 (0)457 361 3703